



# THE WORLD OF SATTLER



# CONTENT

## QUALITIES

Overview 04

## SPECIAL FEATURES

Material 06

TEXgard Easy Clean 07

Environment and Energy savings 08

UV-protection 09

Design Selector 10

## COLLECTION

Overview 11

Regional Design 12

Lumera 3D 14

Lumera 16

Elements 18

## SPECIALS

29





JOIN US IN **A JOURNEY**  
**TO A WORLD** OF  
DAZZLING VARIETY,  
FASCINATING COLORS  
AND UNFORGETTABLE  
IMPRESSIONS!



WELCOME TO THE WORLD OF SATTLER FABRICS!



# QUALITIES

## THE THREE BEST ANSWERS TO **QUALITY** RELATED QUESTIONS.

Sattler exclusively uses solution-dyed premium acrylic for its awning fabrics. This insures your patio will remain protected and cool for many years, provided the awning is properly installed and maintained.

**100 % PREMIUM ACRYLIC IS FOUND IN EVERY SATTLER COLLECTION**

ELEMENTS

LUMERA

LUMERA 3D



100 % ACRYLIC  
STAPLE FIBER



AWNINGS FROM SOLUTION-DYED BRANDED ACRYLIC ENSURE **QUALITY** IN EVERY FIBER.

Solution-dyed means that the pigment is already added to the yarn during the manufacturing process. Therefore „bleaching“ is never an issue for Sattler fabrics. And since ACRYLIC yarn is resistant to UV without having to add any chemical substances, your awning will last for many years and maintain its stability! Moreover, with TEXgard, Sattler's exclusive finish, water pearls off the surface and dirt does not adhere to it. This finish acts as a protection shield on the fabric.

In our ELEMENTS range, **textured acrylic yarns** are woven together. This creates a unique textile character.

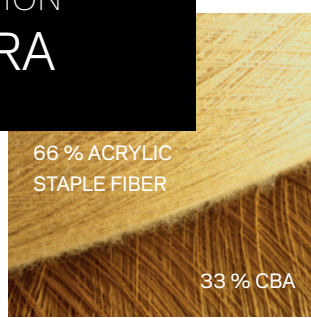
COLLECTION  
**ELEMENTS**





CBA

COLLECTION  
LUMERA



66 % ACRYLIC  
STAPLE FIBER

33 % CBA

## AWNING FABRICS FROM CBA YARN – A REAL HIGH-TEX PRODUCT.

We have managed to make awning fabrics more brilliant by using a **smooth and bright** acrylic yarn:

**CBA = Clean Brilliant Acrylic.** What does this actually mean for the awning fabrics of our LUMERA quality?

- The use of this yarn results in a smoother and denser surface, which improves the self-cleaning effect.
- Colors shine even more intensive and clear.
- The textile character remains the same.

Lumera is unique – These awning fabrics are only available at Sattler! When choosing your fabrics, check for the **CBA-button!**

## INNOVATION MADE BY SATTLER – THE PALPABLE DIFFERENT AWNING FABRIC.

We were the first to introduce a compact awning weave into the market with a structure which is perceptible by touch. For the fabrics of our LUMERA 3D line we do not only use the **brilliant CBA yarn** in the weft – as in LUMERA – but additionally combine it with the **textured staple yarn** in the warp. This results in unique haptics and visual appearance:

- Remarkable tactile structures.
- Impressive effects due to the special light action.
- Improved dirt and water repellency properties.

CBA

COLLECTION  
LUMERA 3D



33 % ACRYLIC  
STAPLE FIBER

66 % CBA



# MATERIAL

100 %  
PREMIUM  
ACRYLIC

CBA

## SATTLER OFFERS PREMIUM QUALITY IN **EVERY FIBER.**

**HIGH-TEX** IS NOT ONLY A PROMISE, BUT A FACT THAT CAN BE FOUND IN EVERY YARD OF OUR FABRICS.

Our premium awning fabrics are made from 100 % solution-dyed branded acrylic. This guarantees top-level functionality, outstanding UV protection and an amazing textile feel. Colors resist fading, and fabric will not break down even after years of exposure to the sun.

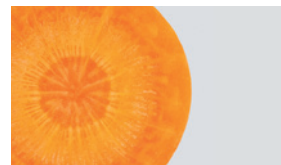
Moreover, in our Lumera and Lumera 3D collections, we use CBA-yarn; a fiber exclusively developed for Sattler. 'Clean Brilliant Acrylic' stands for a smooth, brilliant acrylic yarn, which makes it easier to remove dirt and water and makes colors shine brighter.

COLOR: THE DIFFERENCE LIES **BENEATH THE SURFACE.**

Sattler qualities:

**Solution-dyed acrylic**

Color pigments are infused all the way to the core of the fiber.



Other qualities

**Yarn-dyed fiber**

Pigments penetrate just the outer surface of the fabric; thus these fabrics fade over time.



### YOUR BENEFITS:

- Colors remain bright and luminous for many years
- High UV fastness protecting the colors from fading as well as fabric degradation.
- Outstanding water, dirt and fungus repellency
- Best weather-proof outdoor fiber

# TEXGARD finish



## THE SPECIAL ANTI-AGING PROGRAM FOR LASTING BEAUTY.

**TEXGARD EASY CLEAN:** HIGH QUALITY, LONG LASTING PROTECTION FOR YOUR AWNING FABRIC.

At Sattler, every single fiber is carefully covered with a protective coating. Our proprietary impregnation prevents the permeation by water, humidity and dirt, thus supporting the self-cleaning effect. Dirt pearls roll down the surface like water drops on leaves.

TEXTILES BY SATTLER DISTINGUISH THEMSELVES THROUGH:

- An outstanding dirt and fungus-repellence
- High water repellence
- Very good rolling behavior
- Excellent textile feeling
- Brilliant and durable colors

OUR FABRICS AS **ROLE MODEL.**

Sense of responsibility is what counts. Therefore, certification according to international quality management system standards such as ISO 9001 and ÖKO-TEX® standard 100 are a must to us. The development and manufacturing of our awning fabrics are in compliance with all established standards required to ensure the quality of our products. Furthermore, our products fulfill all requirements of the REACH regulation, which means that all chemicals we use meet the most demanding criteria of the European Union.

OPTIMUM CLEANING:

Prolong the life of your awning by cleaning it properly with a soft brush, a mild soap solution and some water. Do not roll up your awning when wet. By following these instructions you will enjoy your Sattler awning for many years.

# ENVIRONMENTAL & ENERGY



## THESE SHADES BLEND WITH THE **ENVIRONMENT.**

FOR SATTLER, **ENVIRONMENTAL PROTECTION** IS A PRINCIPLE WE FOLLOW EVERY DAY.

The certification according to the ISO 14001 environmental management system norm is a voluntary commitment made by Sattler aimed at achieving a balance between ecological and economic objectives.

The continuous development of our environmental awareness is an integral component of our joint responsibility. Therefore, we supervise and optimize the environmental impact of our manufacturing process.

This is how we contribute towards leaving a healthy planet for future generations.

SOME OF THE ACTIONS WE TAKE:

- Production of our awning fabrics uses only clean energy (CO<sup>2</sup> neutral).
- We use our own capacitors and compressors to heat our facilities
- We optimize our washing and impregnation processes in terms of energy consumption.

### PREMIUM SHADES WITH **ENERGY SAVINGS EFFECT.**

All our designs are measured according to the amount of heat and light energy that passes through the fabric. Awning fabrics filter at least 70 % of the heat gain. This shows that awnings substantially contribute to saving energy reducing the need for air conditioning.

# UV PROTECTION



## IT IS ALL ABOUT DESIGN AND PROTECTION FOR YOUR SKIN.

SATTLER FABRICS REDUCE UV PENETRATION BY UP TO 99 %.

What many of us ignore: we are also exposed to UV rays, which are harmful to our skin, even in the shade. This is why it is particularly important for Sattler that our fabrics undergo the most rigorous tests.

Our fabrics are tested according to the **UV Standard 801**. This testing method does not only consider the fabric when new, but also how the fabric behaves **under different weather conditions**. This means the fabrics are exposed to extreme conditions (e. g. extreme exposure to the sun and weather). This helps to determine if the fabric keeps its durability promise over the years.

This is the only way to ensure that the fabric you choose will meet your demands.

How much protection do we offer?

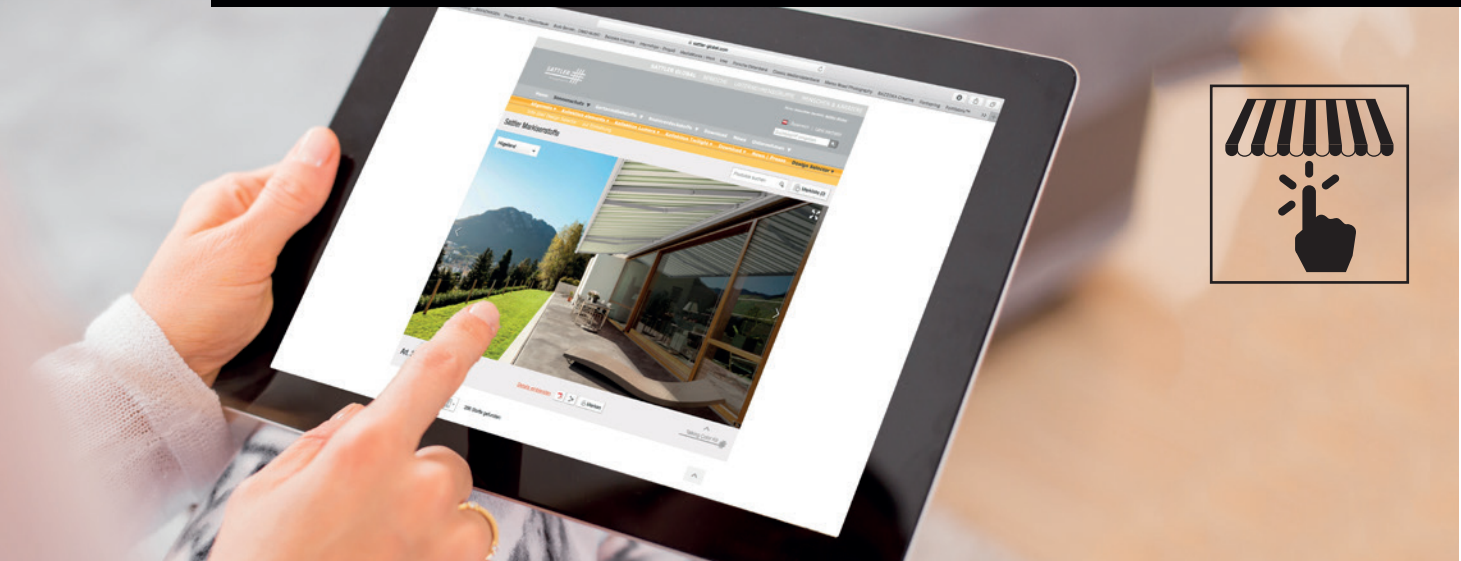
UV 80 = Blocks 98,75 % of UV radiation

UV 40 = Blocks 97.5 % of UV radiation

UV PROTECTION IN COMPARISON	UV- or sun protection factor
Light cotton clothes (according to UV Standard 801)	aprox. 2 - 10
Sunscreen when used properly (SPF)	0 - 30
Shadow under a tree	aprox. 5 - 15
Shadow under a parasol (without spec. UV-protection)	aprox. 2 - 15
Sattler sun protection textiles	40 - 80

The indicated UV-protection factor is guaranteed in accordance to the most demanding measurement procedures worldwide: simulation of real situations under extrem weather conditions, such as the simulation of the intensity of the Australian sun. Source: Hohenstein Institute.

# DESIGN SELECTOR



## WE DELIVER THE BEST QUALITY AND THE BEST **DECISION MAKING TOOL.**

“SATTLER DESIGN-SELECTOR” HELPS YOU TO MAKE A **FAST AND CONVENIENT** PRE-SELECTION OF YOUR FAVORITE DESIGNS.

To optimize the selection of your awning fabrics, you can choose among different outdoor scenes and see them already installed. This will let you see how the awning will look with the fabric you have selected. Once you have made your decision, you can use the on line tool to print out the selection information to share with your dealer/retailer.

With just four simple steps, you can relax, enjoy, compare, select and send your enquiry.

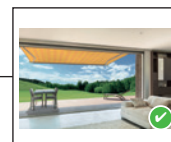
[www.sattler-corp.com](http://www.sattler-corp.com) → Design selector

1



Filter according to color, collection or sample. Choose favorite fabric.

2



Choose an outdoor scene, and view your selection on the awning.

3



Print the technical data sheet of the selected articles...

4

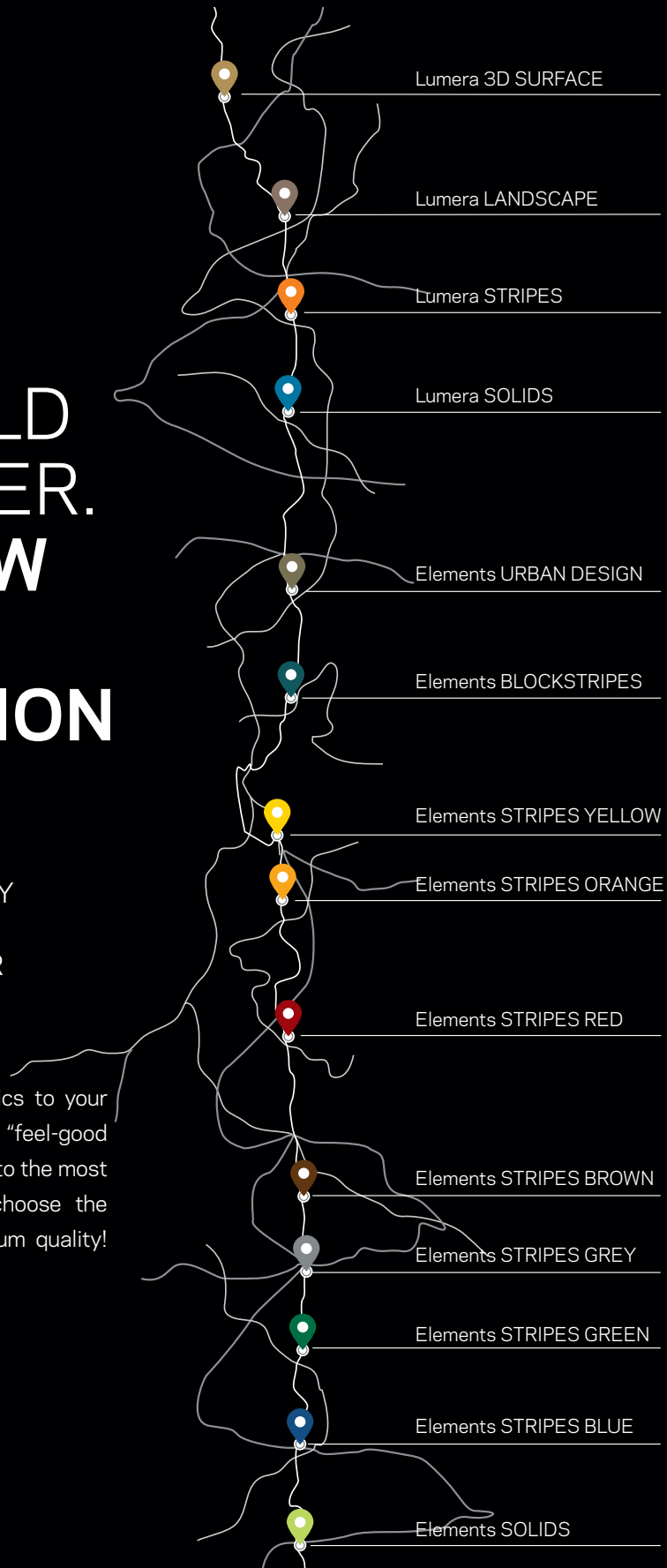


... or save as a PDF to email directly to your dealer.

# THE WORLD OF SATTLER. OVERVIEW OF THE COLLECTION

WE ARE SURROUNDED BY  
LIGHT AND COLOR; BOTH  
HAVE AN IMPACT ON OUR  
**LIFE AND WELL-BEING.**

Bring the World of Sattler Fabrics to your home and create your very own "feel-good atmosphere". Join us in a journey to the most inspiring spots on earth and choose the most beautiful designs in premium quality!



# REGIONAL DESIGN

WE THINK GLOBALLY  
AND ACT **LOCALLY**  
IN THE FULL SENSE OF  
THE WORDS.





2

Region specific color resonances define the basic colors.

»SHADOWS FROM MY REGION.«

## AWNINGS DESIGNS BY SATTLER ARE **SNAPSHOTS OF OUR WORLD.**

The color worlds we perceive in our living spaces are influenced by light, climate, landscape and culture. The color climate of a region is decisive for our well-being. Sattler reproduces these living spaces in their designs and takes them particularly into consideration when creating the country collections, which focuses on the needs of our consumers.

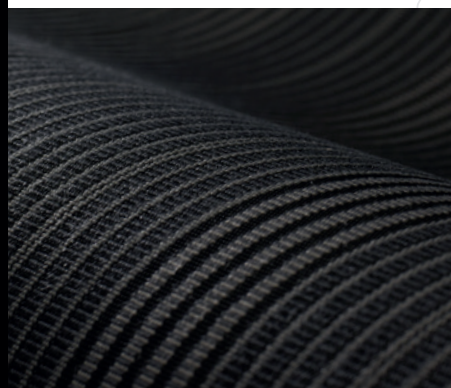
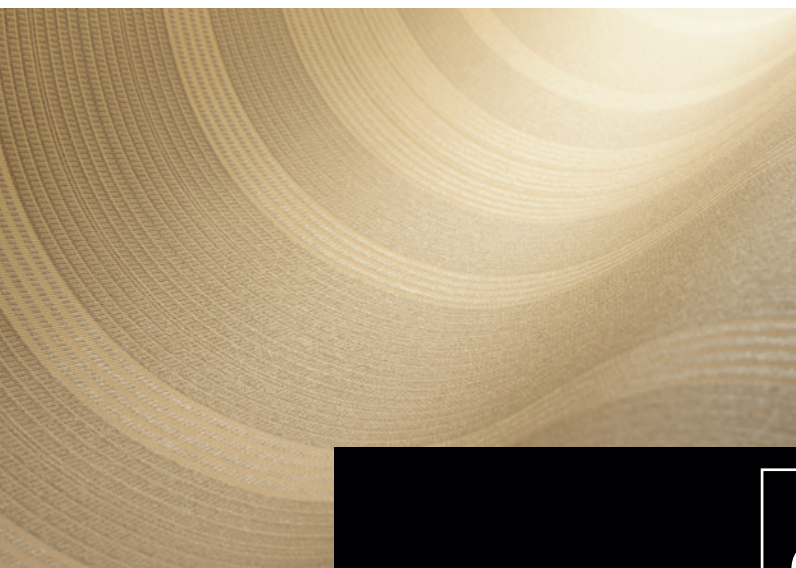
Created in collaboration with Dr. Leonhard Oberascher (Design- and color psychologist)



3

Our designs emerge out of this.



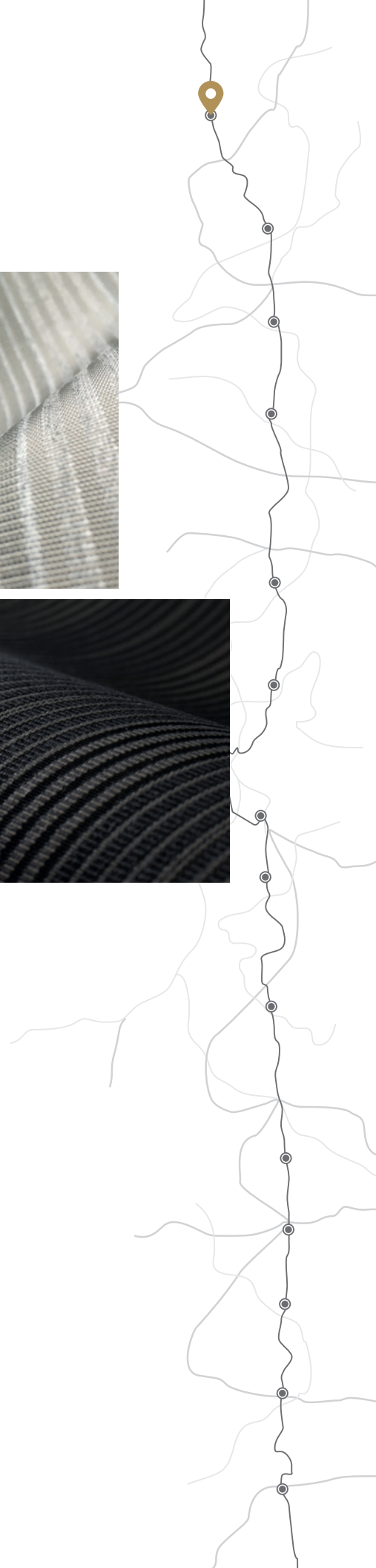


CBA

## COLLECTION LUMERA 3D

NATURE PROVIDES US WITH EVERYTHING WE NEED. **ALSO WITH IDEAS FOR NEW DESIGNS.**

When we spend time under an awning, we are also spending time in the nature and we want to absorb as much of as possible. The designs of our LUMERA 3D collection make this happen. With these designs you can feel the structures and the textile character as you enjoy the colors that reproduce the surfaces of the countryside and urban areas. By using yarns with different surface properties we are able to create a 3D effect, not only visually but also in terms of haptic qualities.



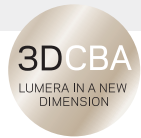
# LUMERA 3D

## LUMERA 3D SURFACE

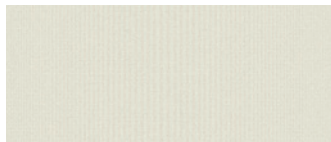


LUMERA 3D **SURFACE** -  
FASCINATING STRUCTURES  
QUOTIDIAN SURFACES.

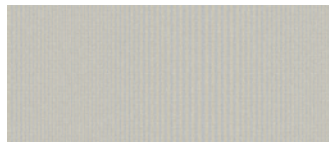
With LUMERA 3D SURFACE we immerse into the world of the 3-dimensional Sattler fabrics. Materials, that we are usually not really aware of, acquire a new meaning in the designs of this collection in terms of structure and color.



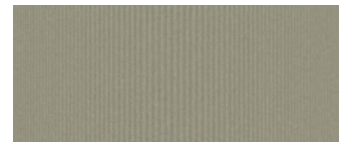
### 📍 SURFACE



385 101 HALIT UV 30



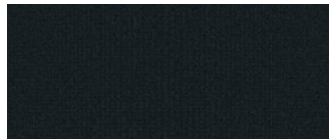
385 802 ZINC UV 80



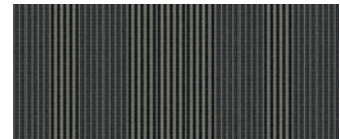
385 803 CHROME UV 80



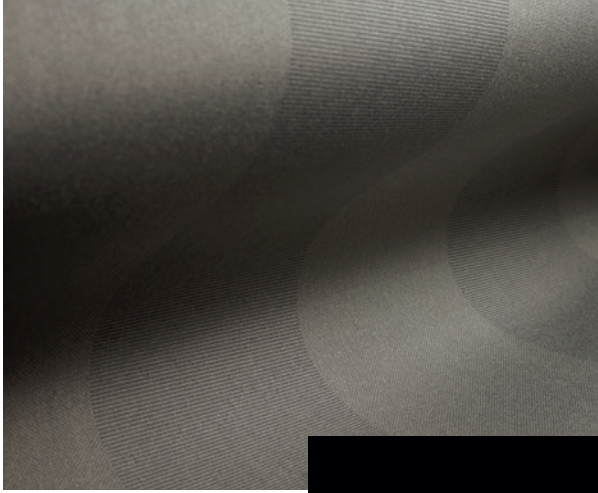
385 810 MARBLE UV 80



385 901 SLATE UV 80



385 910 BASALT UV 80



CBA

## COLLECTION LUMERA



NO LIGHT, NO COLOR  
WITH LUMERA  
COLORS SHINE  
IN **A DIFFERENT LIGHT.**

We are surrounded by light day and night. Be it radiant sunshine, moonlight or the manifold colors of the artificial illumination in the cities and in the countryside. The particularly smooth surface of the fabrics that form part of the Lumera collection provide the colors with a special brightness, that is then reflected in the designs.



# LUMERA

## LUMERA LANDSCAPE & MINI

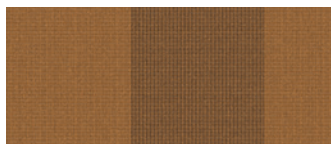


LUMERA **LANDSCAPE** -  
NATURAL, ELEGANT DESIGNS,  
THAT SUBTLY ENRICH THE  
ARCHITECTURE.

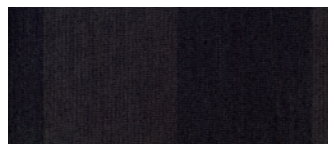
Landscapes with diverse surfaces, varied vegetation influenced by light moods were source of inspiration to these designs. Each awning fabric represents a color hue that interprets different areas in an abstract way.



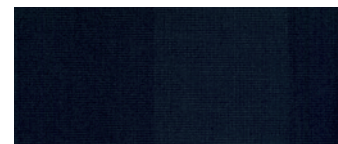
### LANDSCAPE



338 638 SAVANNAH UV 80



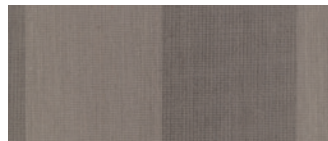
338 640 NAMIB UV 80



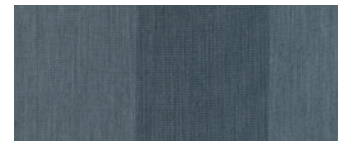
338 665 VULCANO UV 80



338 658 GOBI UV 80



338 639 SAHARA UV 80



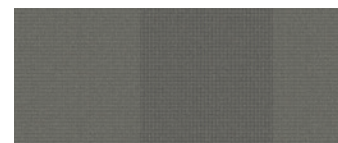
338 655 LADAKH UV 80



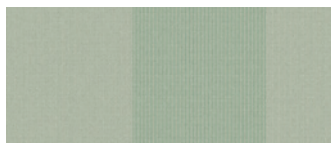
338 659 PAZIFIK UV 80



338 662 BEACH UV 80



338 644 FJORD UV 80



338 642 GREENLAND UV 80

### LANDSCAPE MINI



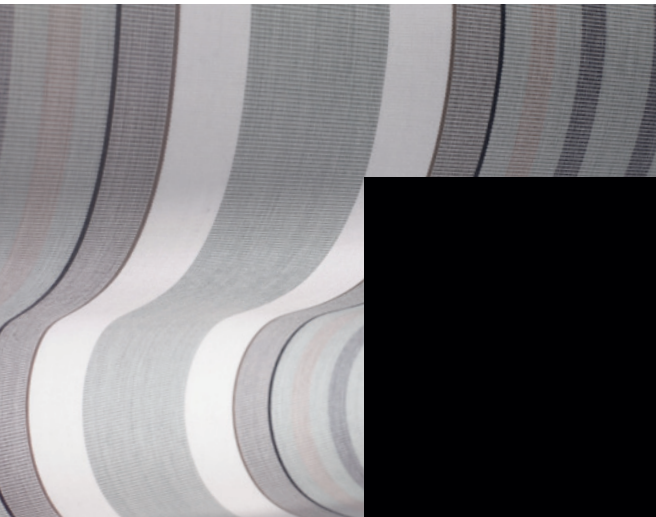
338 620 SAND UV 80



338 621 GRAVEL UV 80



338 623 LAVA UV 80

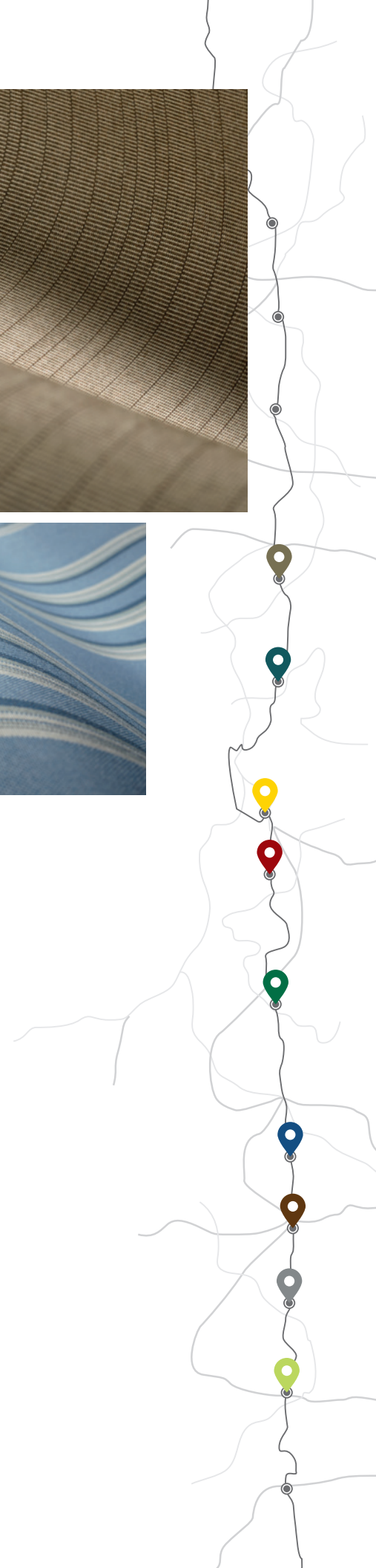


100 %  
PREMIUM  
ACRYLIC

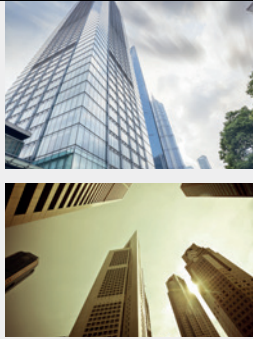
## COLLECTION ELEMENTS

THE BASIS OF OUR CREATIONS:  
**PREMIUM-ACRYLIC FABRICS  
IN OUTSTANDING QUALITY AND  
TOP DESIGNS.**

Be it in the city, in the countryside or somewhere between both - everybody finds a suitable design in our ELEMENTS collection. We base our knowledge in color studies and know what you need and what suits you well. The modern textures of our Urban line. The design, the modern stripes in the most various color shades and the subtle structured solid fabrics complement and round your awning as they turn it into a piece of jewelry.



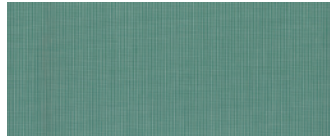
# ELEMENTS



ELEMENTS **URBAN DESIGN** - GO FOR AN URBAN WALK- THROUGH THIS COLLECTION.

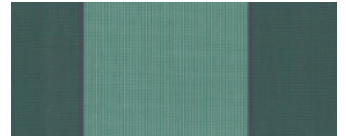
Be it buildings, the sky , green areas or lights - in cities our sight is captured by surfaces in the most various colors and structures, we have captured these surfaces in our designs permanently for you.

## URBAN DESIGN Park



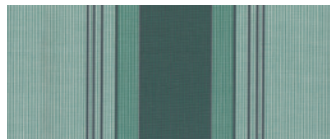
320 928 GRASSY

UV 80



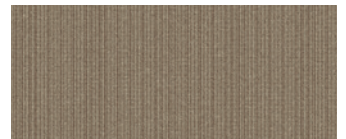
320 956 PARKWAY

UV 80



320 976 HIDEAWAY

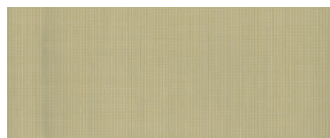
UV 80



320 992 TIMBER

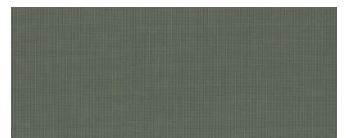
UV 80

## URBAN DESIGN Lights



320 930 SUNNY

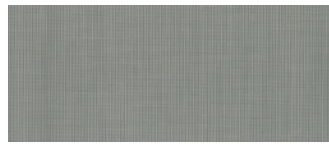
UV 60



320 931 SUNBEAM

UV 60

 URBAN DESIGN Wall



320 923 STEEL UV 80



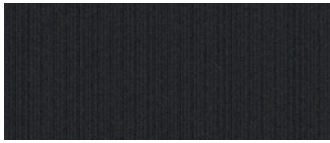
320 925 GRID UV 80



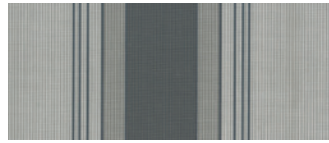
320 937 IRON UV 80



320 954 ALLOY UV 80



320 994 BLACK BRICK UV 80

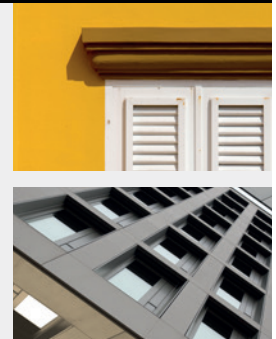
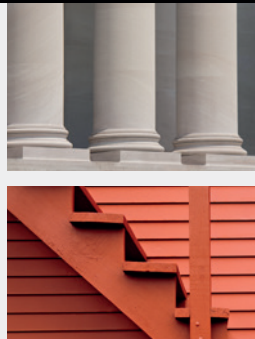


320 974 SILL UV 80

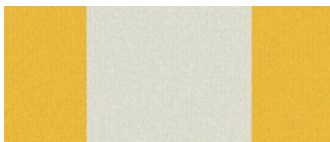


320 993 CONCRETE UV 80

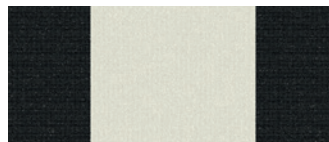
ELEMENTS



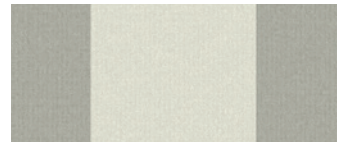
 BLOCKSTRIPES



315 052 CLARITY UV 40



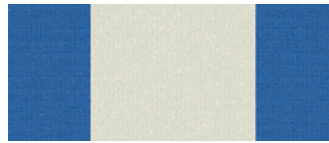
315 105 WILDLIFE UV 40



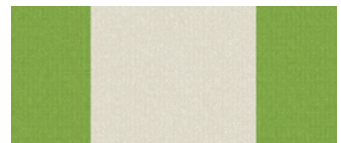
315 352 DOWNTOWN UV 40



315 420 BRANCH UV 40

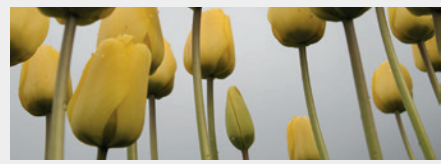


315 422 SURROUND UV 40

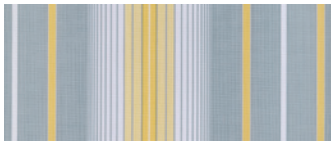


315 602 BRIGT MEADOWS UV 40

# ELEMENTS



## 📍 STRIPES Yellow



364 053 SUMMER UV 60



320 243 SANDY BEACH UV 80



320 255 HELIOS UV 60

## 📍 STRIPES Red



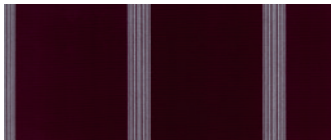
364 064 RUDDY UV 60



320 408 MUNICIPAL UV 60



320 439 AUTUMN UV 80



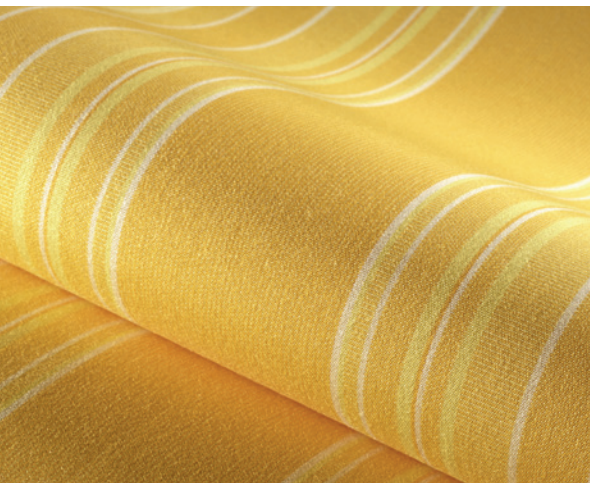
320 758 ROOF TILE UV 80



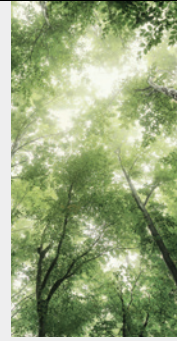
320 458 TRACK MARS UV 80



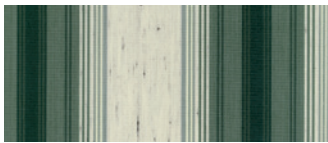
320 460 FRAME CHILI UV 80



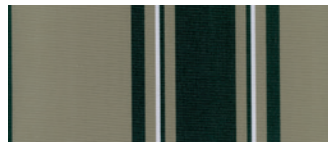
# ELEMENTS



## STRIPES Green



320 B70 FORESTAL UV 40



320 253 WOODEN UV 80



320 600 BACK YARD UV 80



320 658 TRACK EARTH UV 80



320 660 FRAME PINE UV 80



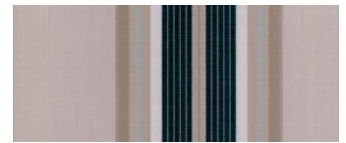
320 676 GREENFILED UV 80



320 683 GRASSLAND UV 80



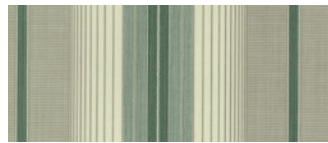
320 684 RURAL UV 80



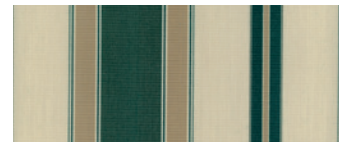
320 909 GREENWOOD UV 80



320 914 TERRAIN UV 80



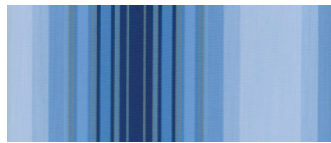
364 203 HAYFIELD UV 80



364 598 LANDSKIP UV 80



 STRIPES Blue



320 190 LAKESIDE UV 60



320 409 BLUE LAGOON UV 80



320 556 SEASIDE UV 80



320 560 FRAME BLUEBERRY UV 80



320 573 SKYLINE UV 80



320 574 OASIS UV 80



320 577 VIEW UV 80



320 584 AMBIENCE UV 80



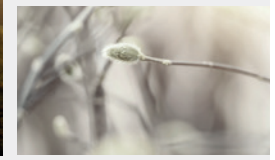
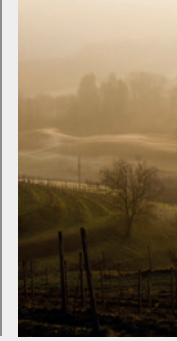
320 959 SEASHORE UV 60

ELEMENTS STRIPES

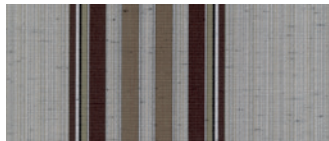
22 | 23

WORLD OF SATTLER

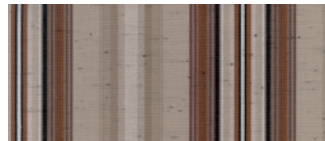
# ELEMENTS



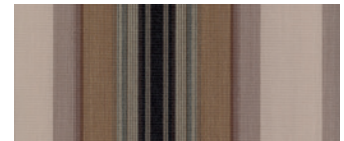
## STRIPES Brown



364 056 HIKE UV 80



320 428 CROSSPOINT UV 80



320 441 WALK UV 80



320 701 SOIL UV 80



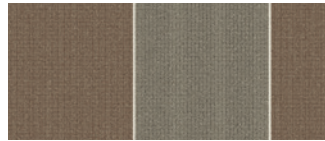
320 702 SANDY UV 80



320 708 GROUND UV 80



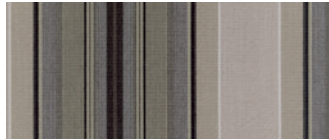
320 710 BRICK UV 80



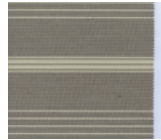
320 711 UPRIGHT UV 80



320 713 DOMAIN UV 80



320 715 RAMBLE UV 80



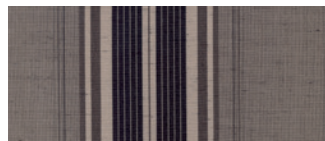
320 716 CIVIC UV 80



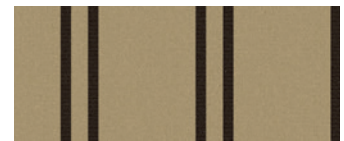
320 721 HISTORY UV 80



320 903 RIDGE UV 80



320 904 COUNTRYSIDE UV 80



320 760 FRAME WHEAT UV 80

📍 STRIPES Grey



30A 734 SIMPLE UV 40



320 486 BELT UV 60



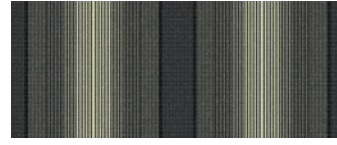
320 493 SEQUENCE UV 80



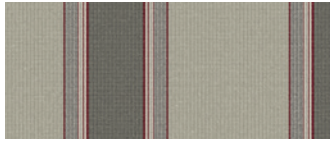
320 812 ONSHORE UV 80



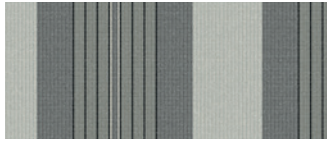
320 823 DASH UV 80



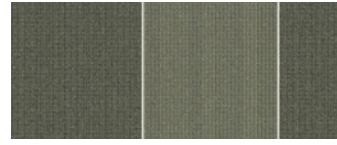
320 829 LANE UV 80



320 838 SUBURB UV 80



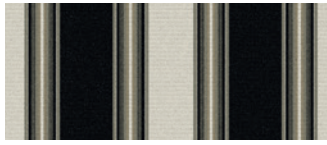
320 839 TRUSS UV 80



320 846 TALLY UV 80



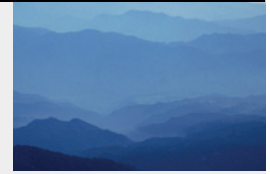
320 847 STRAIGHT UV 80



320 958 TRACK MOON UV 80



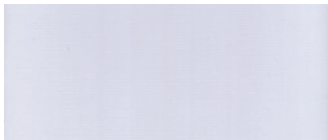
# ELEMENTS



ELEMENTS **SOLIDS** -  
SIMPLE MONOCROME TONES  
WERE YESTERDAY, TODAY,  
STRUCTURES PREVAIL.

But solids are not all the same. Be it mottled tones or colors with delicate accents or with subtle textures, the current color range of our ELEMENTS SOLIDS collection is a creation we can be proud of. For all colors of the nature can be found in our fabrics in the most varied way.

## SOLIDS



314 010 CLOUD

UV 40



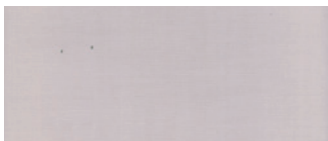
314 910 SNOW

UV 40



314 471 BIRCH

UV 60



314 325 ALMOND

UV 60



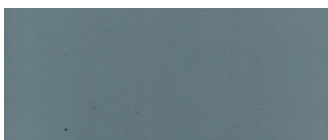
314 028 GRAPHITE

UV 80



314 030 FOG

UV 60



314 941 SCREE

UV 80



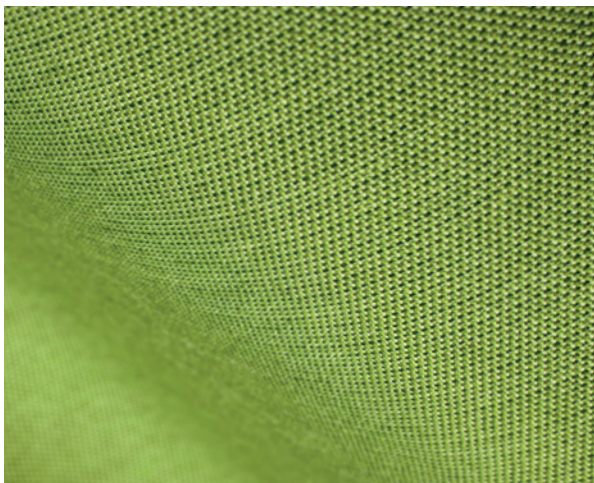
314 006 ROYAL BLUE

UV 80



314 414 MARINE

UV 80





 SOLIDS



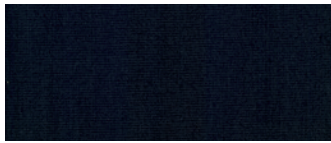
314 402 NIGHT SKY UV 80



314 011 NAUTICAL UV 80



314 016 MAHAGONY UV 80



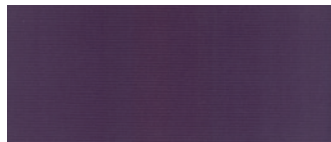
314 638 ASH UV 80



314 153 SKY UV 80



314 154 BLACK PEPPER UV 80



314 143 PLUM UV 80



314 763 BORDEAUX UV 80



314 013 NUT UV 80



314 001 STRAWBERRY UV 80



314 347 CHERRY UV 80



314 022 COPPER UV 80



314 397 MAGENTA UV 80



314 007 LILY UV 80



314 002 ORANGE UV 80



314 005 PEACH UV 80



314 003 YELLOW UV 80

ELEMENTS SOLIDS

26 | 27

WORLD OF SATTLER

 SOLIDS



314 814 CASHEW UV 80



314 081 GREIGE UV 80



314 851 MILKY UV 80



314 071 DUNE UV 80



314 080 METAL UV 80



314 070 OYSTER UV 80



314 020 SHELL UV 80



314 921 HAZEL UV 80



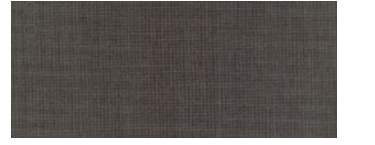
314 919 DESERT UV 80



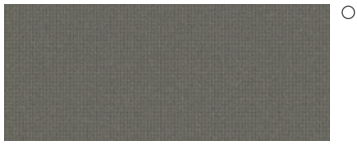
314 083 FORGE UV 80



314 072 BARKE UV 80



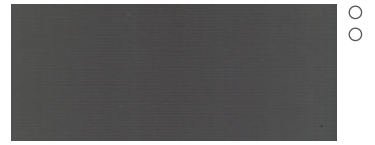
314 403 OAK UV 80



314 085 ROCKS UV 80



314 917 EARTH UV 80



314 819 CAVE UV 80



314 396 LEAF UV 80



314 624 AVOCADO UV 80



314 398 GREY STONE UV 80



314 362 FOREST UV 80

○ ○ ○ = Price category  
○ ○ ○ ○ ○

# SPECIAL SOLUTIONS FOR SPECIAL REQUIRMENTS.

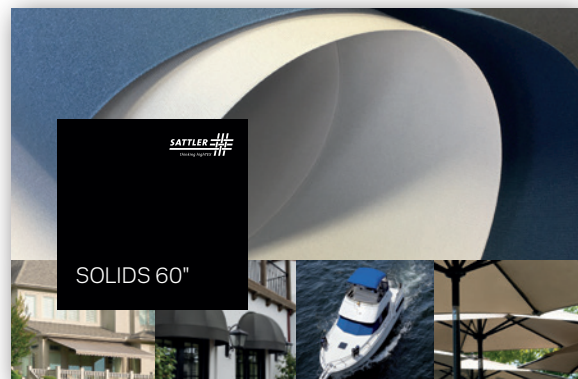
## 60" BIG SUR



YOU ARE LOOKING FOR TIMELESS STRIPES?

If you need a wider with and you are going for the traditional block stripes - have a look at our BIG SUR assortment!

## 60" AWNING & MARINE SOLIDS



YOU NEED IT WIDER? CHOOSE OUT OF 36 SOLIDS.

We offer a large range of Solids in 60 inches with for a lot of applications

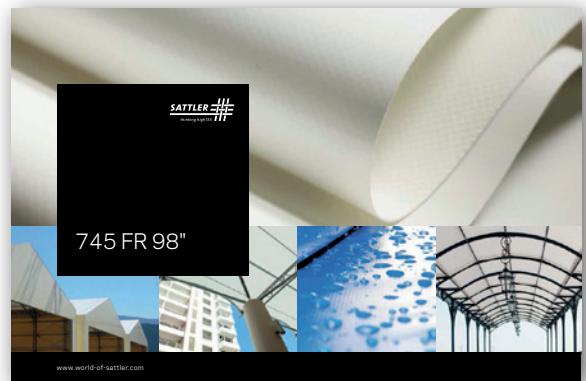
## FIREMASTER



FIRE RETARDANT -  
EVERYWHERE,  
WHERE REQUIRED.

Firemaster is particularly suitable for applications where stringent fire safety standards must be fulfilled, without having to renounce to modern colors or delicate textures.

## 745 FR



OUR PVC COATED POLYESTER  
PROGRAM FOR THE HIGHEST  
REQUIREMENTS.

Water resistant, digital printable and this material fulfills all demands to the national standards of flame retardency.

# THE WORLD OF SATTLER.

